

Building a Background Map from your ArcGIS MXD

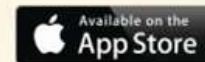
6.9.14

GeoSync[®] GO CLOUD SERVICE

Your maps, anywhere



- > Recreation
- > Business
- > Government



What you need to get started

- A GeoSync GO Cloud account
- Computer running Windows 7 or later
- GeoSync GO Desktop installed
 - <http://www.mapsync.com/tools>
- ArcMap 10.1 or 10.2 installed and licensed
- GeoSync GO Tilebuilder app installed
 - Match version of ArcGIS
 - [https://gsgo.blob.core.windows.net/\\$root/SetupGoTileBuilder10.1.zip](https://gsgo.blob.core.windows.net/$root/SetupGoTileBuilder10.1.zip)
 - [https://gsgo.blob.core.windows.net/\\$root/SetupGoTileBuilder10.2.zip](https://gsgo.blob.core.windows.net/$root/SetupGoTileBuilder10.2.zip)
- GeoSync GO (Windows) installed
 - Activated for testing purposes
 - <http://www.mapsync.com/download>

Sign-in to your account

- Open the GeoSync GO Desktop
- Sign-in using your account credentials
 - If this is the first time it may take a minute to set things up
- If the street map is not centered on your project area then
 - Follow instructions to set default map location
 - <http://www.mapsync.com/help/item/How-to-save-your-default-startup-location>
 - Reopen (refresh) the project



Activate GeoSync GO for testing

- **If already activated then skip (check for project)**

- Desktop

- Open Manage Devices
- Generate 6 digit code

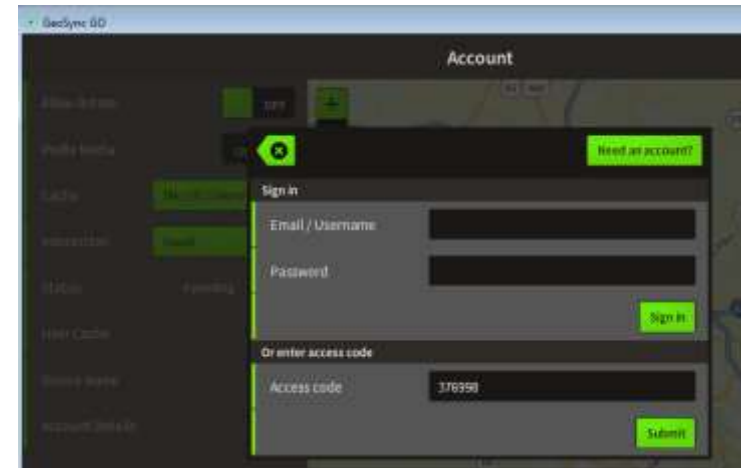
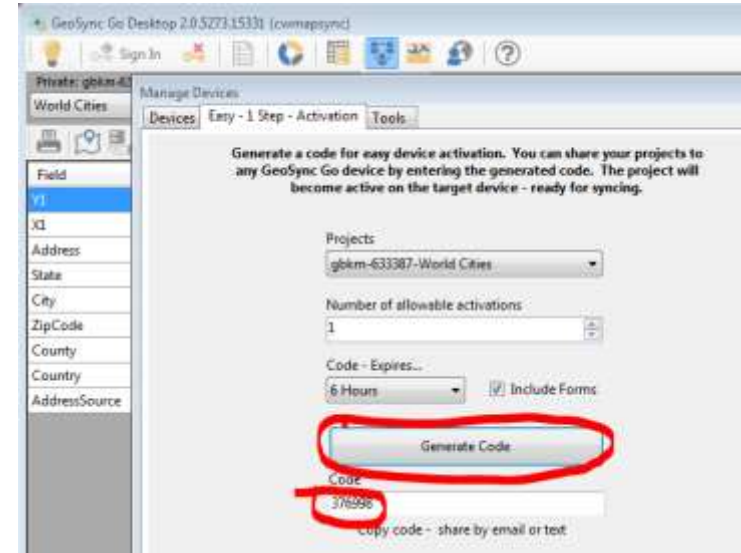
- GeoSync GO (Windows)

- Find Account Screen
- Submit Access Code

- **Set Current Project**

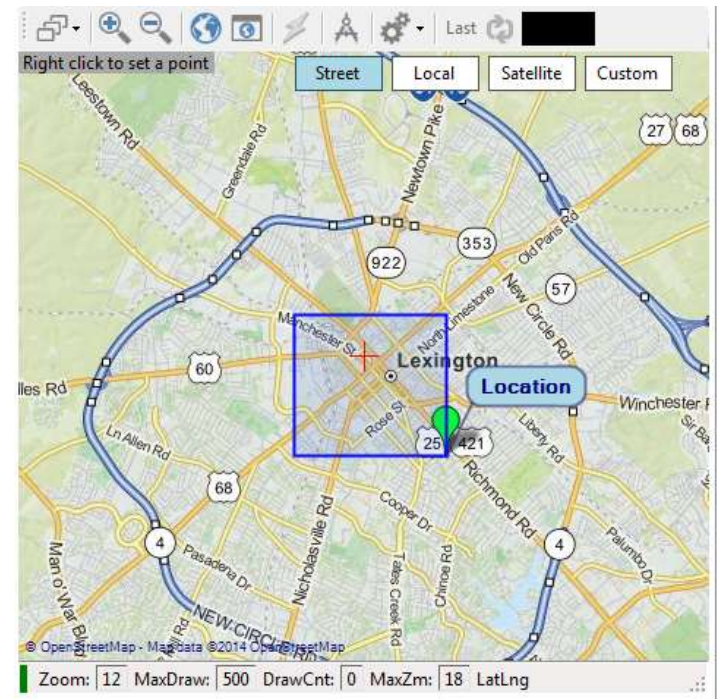
- Mobile

- Projects menu
- Select project
- Sync project



Mark target area for the background map

- Desktop
 - Navigate the street map so your project area is on the screen
 - Drag a rectangle over the area
 - Alt-right click - drag



Create Grid Files

- Grid files are configuration files
 - Defines the tile grid for each zoom level
- Desktop
 - Tools – Build Map Grids... (see next page)
 - Give the map a name (MyMap1)
 - Check target levels
 - Pay attention to estimated number of tiles
 - Large numbers can take a very long time
 - for testing – try levels 11-15 or 16
 - Click Build Grid Files to Run

Create Grid Files

GeoSync Go Desktop 2.0.5273.15331 (cwmapsync)

Private: gbkm-633 World Cities

Field: Y1, X1, Address, State, City, ZipCode, County, Country, AddressSource

Build Map Grids...

Map Cache Folder: MyMap1

Filter Polygon Found Use Filter Polygon

Level	Scale	Estimated Tiles	Grid Filename	Comment
<input checked="" type="checkbox"/> 11	1:288,895.2884	1	11.grid.csv	Filter Off: 1 Tiles Written
<input checked="" type="checkbox"/> 12	1:144,447.6442	1	12.grid.csv	Filter Off: 1 Tiles Written
<input checked="" type="checkbox"/> 13	1:72,223.8221	2	13.grid.csv	Filter Off: 2 Tiles Written
<input checked="" type="checkbox"/> 14	1:36,111.9111	6	14.grid.csv	Filter Off: 6 Tiles Written
<input checked="" type="checkbox"/> 15	1:18,055.9555	20	15.grid.csv	Filter Off: 20 Tiles Written
<input checked="" type="checkbox"/> 16	1:9,027.9778	56	16.grid.csv	Filter Off: 56 Tiles Written
<input type="checkbox"/> 17	1:4,513.9889	182	17.grid.csv	
<input type="checkbox"/> 18	1:2,256.9944	675	18.grid.csv	
<input type="checkbox"/> 19	1:1,128.4972	2700	19.grid.csv	
<input type="checkbox"/> 20	1:564.2486	10800	20.grid.csv	
<input type="checkbox"/> 21	1:282.1243	43200	21.grid.csv	
<input type="checkbox"/> 22	1:141.0622	172800	22.grid.csv	

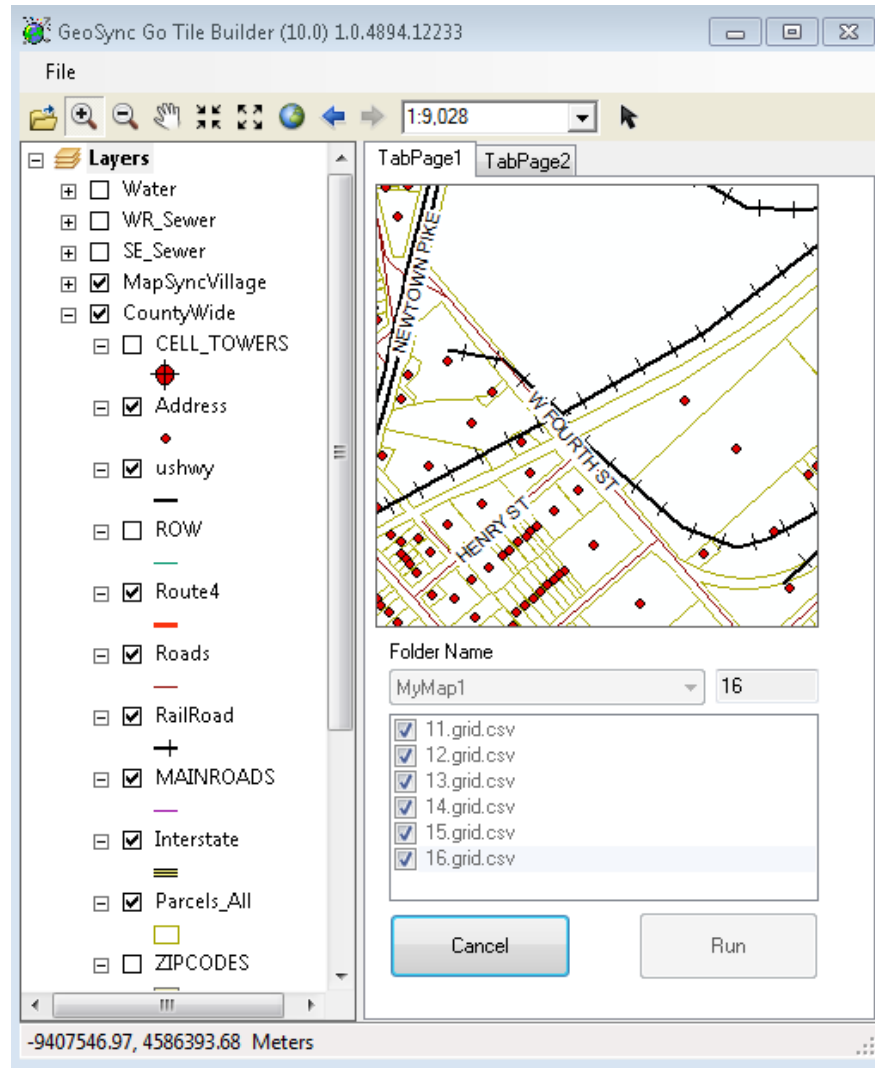
Clear Grid Files Build Grid Files

Expires 2050

Build Map from MXD

- Open Go Tile Builder application (shortcut on your desktop) – see next page
 - Browse to open your source MXD
 - Pick the map (MyMap1) from the combo box
 - Check the levels you want include in the map
 - Click Run (when button is no longer disabled the process is complete)

Go Tile Builder – Map from MXD



Test your new map

- GeoSync GO (Windows)
 - Navigate the street map to your project area
 - Maps menu – MyMap1
 - Zoom between levels 11 – 16



Deploy your map to an Android or IOS device

- <http://www.mapsync.com/help/item/How-do-I-add-a-cached-map-to-an-SD-card>
- <http://www.mapsync.com/help/item/How-do-I-add-a-cached-map-to-an-IOS-device>